



**BRASSELER**  
USA<sup>®</sup> SURGICAL

## LARGE BONE SAW BLADES

COMPATIBLE WITH STRYKER<sup>®</sup>  
SAGITTAL & RECIPROCATING  
SAW SYSTEMS

- ▶ Manufactured With High-Quality Surgical-Grade Stainless Steel
- ▶ Seamless & Easy Conversion Process

***SWITCH TO BRASSELER SAW BLADES &  
SAVE AN AVERAGE OF 40-60% VS. OEM!***

**MADE IN  
USA** 

## Compatible with Stryker® Sagittal Saw Systems: 9, 8, 7, 6, 5, 4, 2000 & EHD

### BR2000™ Sagittal/Oscillating

Brasseler® Part No.	Stryker® Part No.	Length (mm)	Width (mm)	Material Thickness (mm)	Cut Thickness (mm)
BR1-1290-35	6113-089-090	90	12.5	0.89	0.89
BR1-1290-39	6113-097-090	90	12.5	0.99	0.99
BR1-1290-47	6113-119-090	90	12.5	1.19	1.19
BR1-1290-50	6113-127-090	90	12.5	1.27	1.27
BR1-1290-54	6113-137-090	90	12.5	1.37	1.37
BR1-1360-50	6113-127-060	60	13	1.27	1.27
BR1-1370-50F	6213-127-070	70	13	1.27	1.27
BR1-1375-50	6113-127-075	75	13	1.27	1.27
BR1-1390-42	6113-107-090	90	13	1.07	1.07
BR1-1875-35	6118-089-075	75	18	0.89	0.89
BR1-1875-50	6118-127-075	75	18	1.27	1.27
BR1-1990-35	6118-089-090	90	19	0.89	0.89
BR1-1990-39	6118-097-090	90	19	0.99	0.99
BR1-1990-47	6118-119-090	90	19	1.19	1.19
BR1-19100-47	6118-119-100	100	19	1.19	1.19
BR1-1990-50	6118-127-090	90	19	1.27	1.27
BR1-19100-50	6118-127-100	100	19	1.27	1.27
BR1-19110-50	6118-127-110	110	19	1.27	1.27
BR1-1990-54	6118-137-090	90	19	1.37	1.37
BR1-19100-54	6118-137-100	100	19	1.37	1.37
BR1-2190-39F	6221-100-090	90	21	0.99	0.99
BR1-2190-47F	6221-119-090	90	21	1.19	1.19
BR1-2190-50F	6221-127-090	90	21	1.27	1.27
BR1-2190-54F	6221-137-090	90	21	1.37	1.37
BR1-2575-35	6125-089-075	75	25	0.89	0.89
BR1-2590-35	6125-089-090	90	25	0.89	0.89
BR1-2590-39	6125-097-090	90	25	0.99	0.99
BR1-2590-39F	2108-393-005	90	25	0.99	0.99
BR1-2590-47	6125-119-090	90	25	1.19	1.19
BR1-2590-47F	2108-351-002	90	25	1.19	1.19
BR1-2590-50	6125-127-090	90	25	1.27	1.27
BR1-25100-50	6125-127-100	100	25	1.27	1.27
BR1-2590-50F	2108-383-000	90	25	1.27	1.27
BR1-2590-54	6125-137-090	90	25	1.37	1.37
BR1-2590-54F	–	90	25	1.37	1.37
BR1-2590-58	6125-147-090	90	25	1.47	1.47
BR1-2590-58F	–	90	25	1.47	1.47
BR1-3165-39F	–	65	31	0.99	0.99

### Sagittal (Aggressive)

Brasseler® Part No.	Stryker® Part No.	Length (mm)	Width (mm)	Material Thickness (mm)	Cut Thickness (mm)
BR4111-119-090	4111-119-090	90	11	0.99	1.19
BR4111-127-090	4111-127-090	90	11	1.14	1.27
BR4111-135-090	4111-135-090	90	11	1.19	1.35
BR4111-147-075	4111-147-075	75	11	1.37	1.47
BR4118-089-075	4118-089-075	75	18	0.79	0.89
BR4118-089-090	4118-089-090	90	18	0.79	0.89
BR4118-119-090	4118-119-090	90	18	0.99	1.19
BR4118-127-075	4118-127-075	75	18	1.13	1.27
BR4118-127-090	4118-127-090	90	18	1.14	1.27
BR4118-127-100	4118-127-100	100	18	1.14	1.27
BR4118-135-090	4118-135-090	90	18	1.19	1.35
BR4118-135-105	4118-135-105	105	18	1.19	1.35
BR4118-137-090	4118-137-090	90	18	1.27	1.37
BR4125-089-075	4125-089-075	75	25	0.79	0.89
BR4125-089-090	4125-089-090	90	25	0.80	0.89
BR4125-097-090	4125-097-090	90	25	0.88	0.97
BR4125-107-090	4125-107-090	90	25	0.97	1.07
BR4125-119-090	4125-119-090	90	25	0.99	1.19
BR4125-127-090	4125-127-090	90	25	1.14	1.27
BR4125-127-100	4125-127-100	100	25	1.14	1.27
BR4125-135-090	4125-135-090	90	25	1.19	1.35
BR4125-137-090	4125-137-090	90	25	1.27	1.37
BR4125-147-090	4125-147-090	90	25	1.37	1.47
BR4135-089-064	4135-089-064	64	35	0.80	0.89

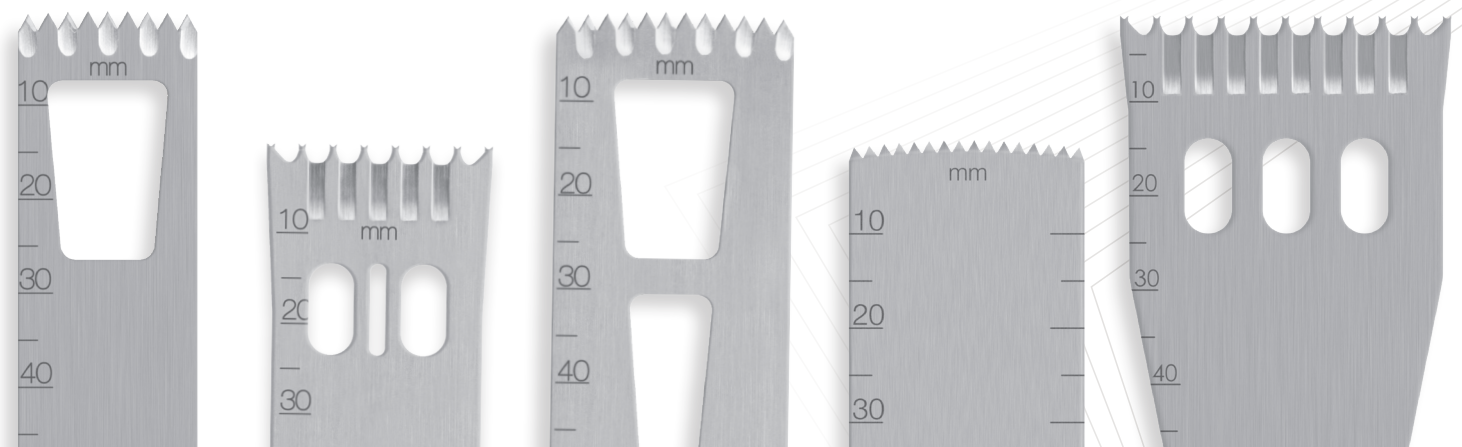
# Compatible with Stryker® Sagittal Saw Systems: 9, 8, 7, 6, 5, 4, 2000 & EHD

## Sagittal

Brasseler® Part No.	Stryker® Part No.	Length (mm)	Width (mm)	Material Thickness (mm)	Cut Thickness (mm)
<b>BR2108-100</b>	2108-100-000	70	25	0.64	0.99
<b>BR2108-102</b>	2108-102-000	85	25	0.89	0.94
<b>BR2108-103</b>	2108-103-000	90	12.5	0.89	0.99
<b>BR2108-105</b>	2108-105-000	70	25	0.89	0.94
<b>BR2108-107-1</b>	2108-107-001	73	29	0.89	0.97
<b>BR2108-107-4</b>	2108-107-004	64	36	1.19	1.55
<b>BR2108-107-4S1</b>	2108-107-4S1	60	35	1.19	1.35
<b>BR2108-107-9</b>	2108-107-009	60	34.5	0.79	0.79
<b>BR2108-109</b>	2108-109-000	80	21	0.89	0.94
<b>BR2108-109-000S9</b>	2108-109-000S9	81	20	1.27	1.27
<b>BR2108-110</b>	2108-110-000	70	25	1.27	1.47
<b>BR2108-111</b>	2108-111-000	75	25	1.27	1.47
<b>BR2108-113</b>	2108-113-000	30	16.5	1.27	1.65
<b>BR2108-115</b>	2108-115-000	70	18.5	0.79	0.91
<b>BR2108-118</b>	2108-118-000	75	25	1.27	1.27
<b>BR2108-120</b>	2108-120-000	60	18.5	0.64	0.97
<b>BR2108-120-6</b>	2108-120-006	63	19	0.64	0.91
<b>BR2108-125</b>	2108-125-000	45	42	0.64	1.02
<b>BR2108-131</b>	2108-131-000	47.5	18	0.64	1.04
<b>BR2108-140</b>	2108-140-000	55	29	0.64	1.02
<b>BR2108-145</b>	2108-145-000	20	9	0.64	0.79
<b>BR2108-148</b>	2108-148-000	30	9	0.64	0.79

## Sagittal

Brasseler® Part No.	Stryker® Part No.	Length (mm)	Width (mm)	Material Thickness (mm)	Cut Thickness (mm)
<b>BR2108-150</b>	2108-150-000	70	12.5	0.64	0.99
<b>BR2108-151</b>	2108-151-000	85	25	1.19	1.19
<b>BR2108-152</b>	2108-152-000	80	12.5	1.19	1.19
<b>BR2108-155</b>	2108-155-000	70	12.5	1.27	1.45
<b>BR2108-156</b>	2108-156-000	75	12.5	1.27	1.45
<b>BR2108-158</b>	2108-158-000	80	12.5	1.27	1.27
<b>BR2108-160</b>	2108-160-000	70	25	0.89	1.27
<b>BR2108-176</b>	2108-176-000	75	25	1.47	1.47
<b>BR2108-177</b>	2108-177-000	85	25	1.32	1.32
<b>BR2108-182</b>	2108-182-000	80	18.5	1.27	1.27
<b>BR2108-183</b>	2108-183-000	80	29	1.27	1.27
<b>BR2108-183-1</b>	2108-183-001	84	29	0.97	0.97
<b>BR2108-183-3</b>	2108-183-003	84	29	1.32	1.32
<b>BR2108-185</b>	2108-185-000	100	18.5	1.27	1.27
<b>BR2108-193</b>	2108-193-000	80	25	1.04	1.04
<b>BR2108-195</b>	2108-195-000	90	48.5	0.99	0.99
<b>BR2108-197</b>	2108-197-000	60	48.5	0.64	0.99
<b>BR2108-218</b>	2108-218-000	95	25	1.27	1.27
<b>BR2108-305</b>	2108-305-000	73	25	0.89	0.89
<b>BR2108-309</b>	2108-309-000	84.5	21	0.89	0.89
<b>BR2108-382-2</b>	2108-382-002	89	19	1.37	1.37



## Compatible with Stryker® Sagittal Saw Systems: 9, 8, 7, 6, 5, 4, 2000 & EHD

### ConMed® Linvatec® Tooth Design

Brasseler® Part No.	Replacements	Length (mm)	Width (mm)	Material Thickness (mm)	Cut Thickness (mm)
<b>BR5072-101*</b>	ConMed® Linvatec® 5072-101	86	19.5	1.27	1.27
	Stryker® 2108-109-000S15				
<b>BR5072-181</b>	ConMed® Linvatec® 5072-181	86	19.5	1.27	1.27
	Stryker® 2108-109-000S11				

\*Chromium-coated steel

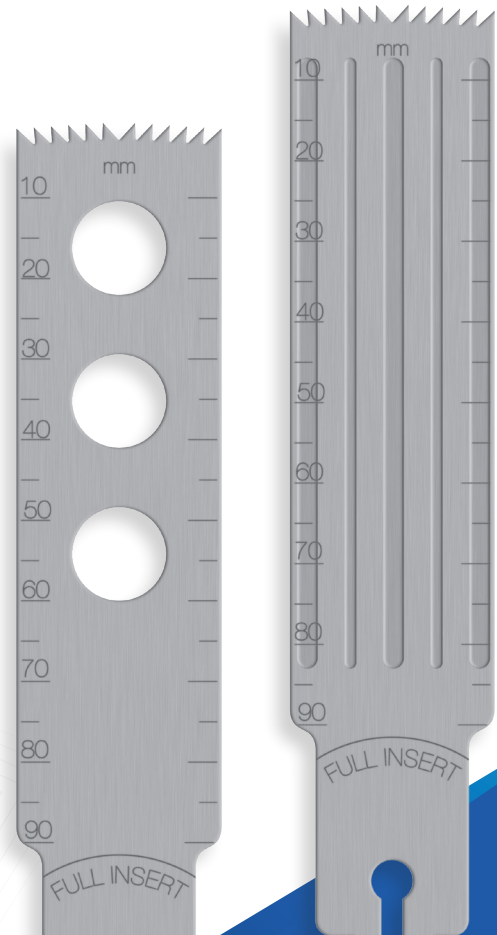
### Zimmer® Biomet® Tooth Design

Brasseler® Part No.	Stryker® Part No.	Length (mm)	Width (mm)	Material Thickness (mm)	Cut Thickness (mm)
<b>KM-250R</b>	277-096-250	60	6.3	0.64	1.04
<b>KM-275R</b>	277-096-275	70	12.5	0.64	0.94
<b>KM-276R</b>	277-096-276	71.4	12.5	0.79	0.99
<b>KM-277R</b>	277-096-277	70.8	12.5	0.63	1.12
<b>KM-281R</b>	277-096-281	70.0	12.7	1.27	1.40
<b>KM-300R</b>	277-096-300	77.5	6.3	0.64	1.04
<b>KM-325R</b>	277-096-325	77.5	11.2	0.76	1.17
<b>KM-326R</b>	277-096-326	77.5	11.0	1.24	1.60
<b>KM-2279-73</b>	—	76	12.7	0.90	0.90

## Compatible with Stryker® Reciprocating Saw Systems: 9, 8, 7, 6, 5, 4, 2000, EHD & OrthoPower

Brasseler® Part No.	Stryker® Part No.	Length (mm)	Width (mm)	Material Thickness (mm)	Cut Thickness (mm)
<b>BR11-2212</b>	11-2212, 25-0901-27S-G1, 25-0901-27T-G1, 25-0901-27Y-F1	90	25	1.27	1.27
<b>BR11-2214</b>	1-2214, 13-0600-89S-F1, 13-0600-89T-F1, 13-0600-89Y-F1	60	13	0.89	0.89
<b>BR11-2220</b>	11-2220, 25-0901-47S-B1, 25-0901-47T-B1, 25-0901-47Y-B1	90	25	1.42	1.47
<b>BR11-2222</b>	11-2222, 25-0901-27S-B1, 25-0901-27T-B1, 25-0901-27Y-B1	90	25	1.22	1.27
<b>BR11-2325</b>	11-2325, 13-0901-27S-F1, 13-0901-27T-F1, 13-0901-27Y-F1	90	13	1.27	1.27
<b>BR11-2608</b>	11-2608, 13-0701-27S-L1, 13-0701-27T-L1, 13-0701-27Y-L1 Stryker® 6213-127-070	70	13	1.27	1.27

ConMed® and Linvatec® are registered trademarks of CONMED Corporation or its affiliates. Biomet® is a registered trademark of Biomet, Inc. or its affiliates. Stryker® is a registered trademark of Stryker Corporation or its affiliates. Zimmer® is a registered trademark of Zimmer, Inc. or its affiliates.

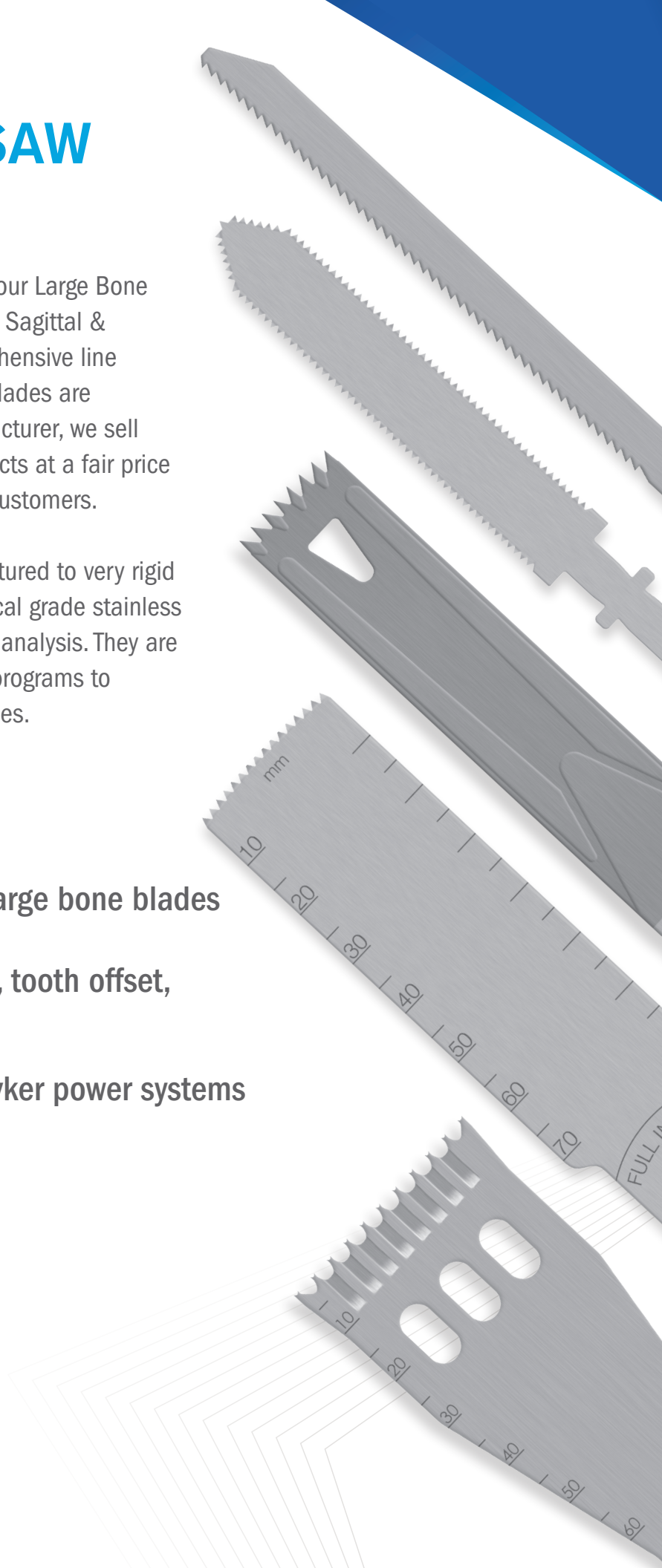


# LARGE BONE SAW BLADES

Brasseler USA Surgical is proud to offer our Large Bone Saw Blade line compatible with Stryker® Sagittal & Reciprocating Saw Systems. Our comprehensive line of high-quality surgical large bone saw blades are manufactured in the USA. As the manufacturer, we sell direct, which allows us to offer our products at a fair price and pass substantial savings on to our customers.

Our products are designed and manufactured to very rigid specifications using only the finest surgical grade stainless steel and undergo extensive engineering analysis. They are then subjected to strenuous inspection programs to ensure outstanding performance outcomes.

- ▶ Offering over 100 different large bone blades
- ▶ Aggressive cut, diamond cut, tooth offset, flared and specialty blades
- ▶ Compatible with several Stryker power systems



# MANAGE COSTS WITHOUT SACRIFICING QUALITY

- ✓ Achieve up to 40-60% Savings vs. OEM
- ✓ Compatible With Major OEM Power Systems
- ✓ Seamless & Easy Conversion Process
- ✓ Over 35 Years of Sales and Manufacturing Experience
- ✓ No Minimum Order Quantity
- ✓ Extensive Cross Referencing System by OEM
- ✓ Free Evaluation Samples



Visit us at [BrasselerSurgical.com](https://www.BrasselerSurgical.com)

To order call 800.535.6638 or fax 912.921.7578.

